

The President has been presented with a proposal to turn 1.4 million acres of public land into what would be known as the Greater Canyonlands National Monument. Our goal is to prevent this from happening. Please join us in the fight to keep our land.

Southeastern Utah Against Greater Canyonlands

Sagebrush Coalition

SAGEBRUSH COALITION PETITION

We the undersigned wish to register our firm belief that there is a delicate balance between environmental protection and economic (human) survival. Few areas have faced such a test as the longtime residents and land stewards of Southeastern Utah. We have contributed more than our share to public land use. The residents of Grand County helped create Canyonlands National Park and convert Arches from a monument to a National Park, but enough is enough. Federal confiscation of our land must be stopped!

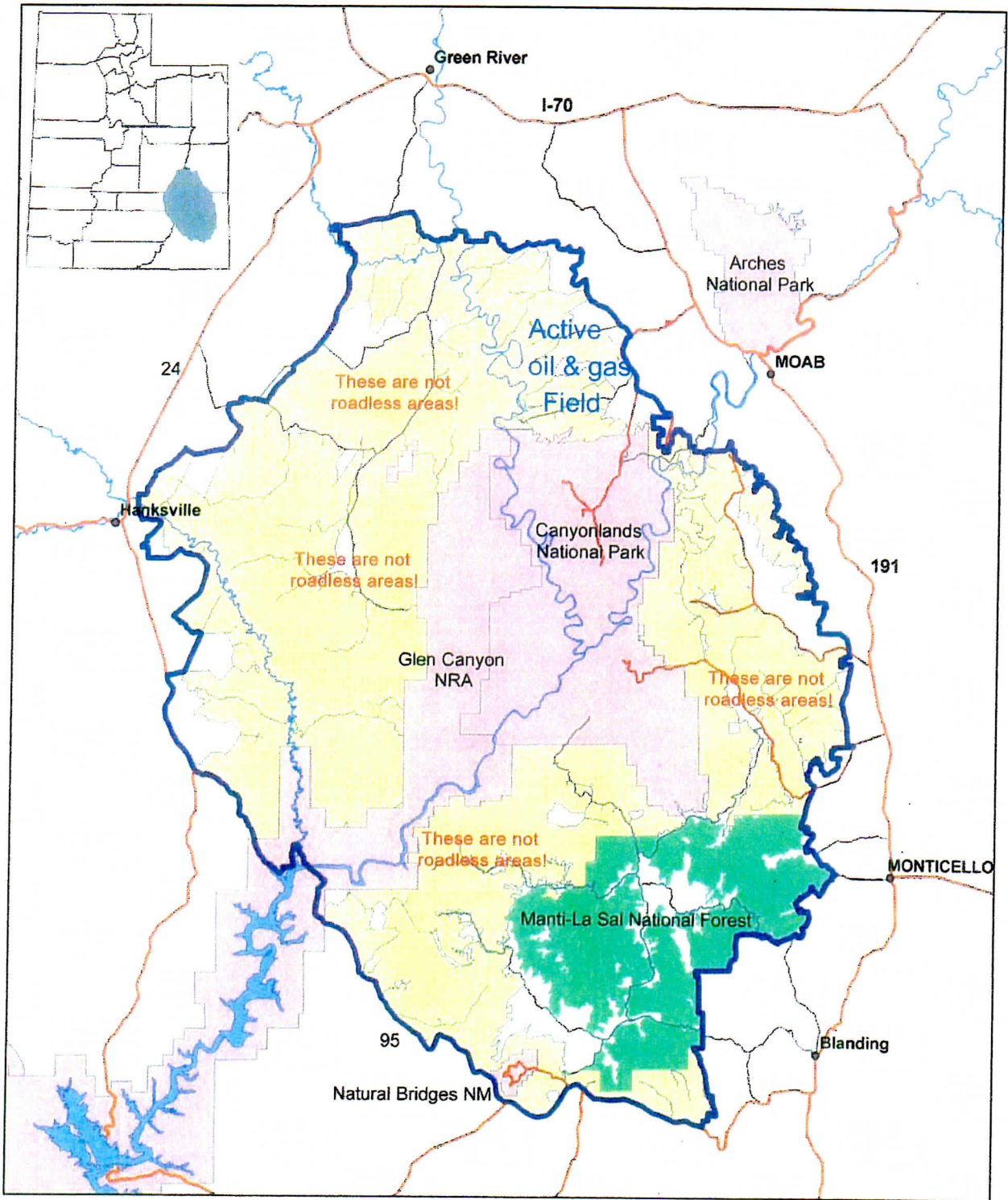
As of July 2011, there were 9,325 residents in Grand County who pay the taxes to build and maintain the infrastructure and services that support the transient populations of well over 1-million people per year. This increased population puts considerable wear on our roads, highways, water and sewer services, and strains the budgets of police/sheriff departments, search and rescue, hospital facilities and others.


Of the 3,694 square miles that make up Grand County, less than 4% is privately owned. The balance of approximately 96% is public land or Indian Reservation, generating no taxes for the county.

As civilization moved west, the federal government provided major funding to develop roads for the exploration of oil, gas, and minerals. These public roads have existed for 75 to 100 years and been well established as RS2477 roads.

In the Antiquities Act of 1906, Wilderness is depicted as "roadless areas". Today the RS2477 public roads serve the tourists who come from all over the world to view our spectacular scenery. If the laws already on the books are correctly enforced, there is no need for further restrictions and designations. Perhaps some of the eastern US land should be reclaimed for wild country. The west has given more than its share, if *humanity is to survive* in Grand County and Southeastern Utah.

PETITION MAP OF SOUTHERN UTAH WILDERNESS ALLIANCE, ET AL.
FOR PROTECTION OF THE GREATER CANYONLANDS



- | | | | |
|---|----------------------------------|---|----------------|
|  | Greater Canyonlands |  | Major Roads |
|  | BLM Roadless Lands |  | Paved Routes |
|  | US Forest Service Roadless Lands |  | County B Roads |
|  | National Park Service | | |
- These BLM & USFS areas are not roadless. see attached road map

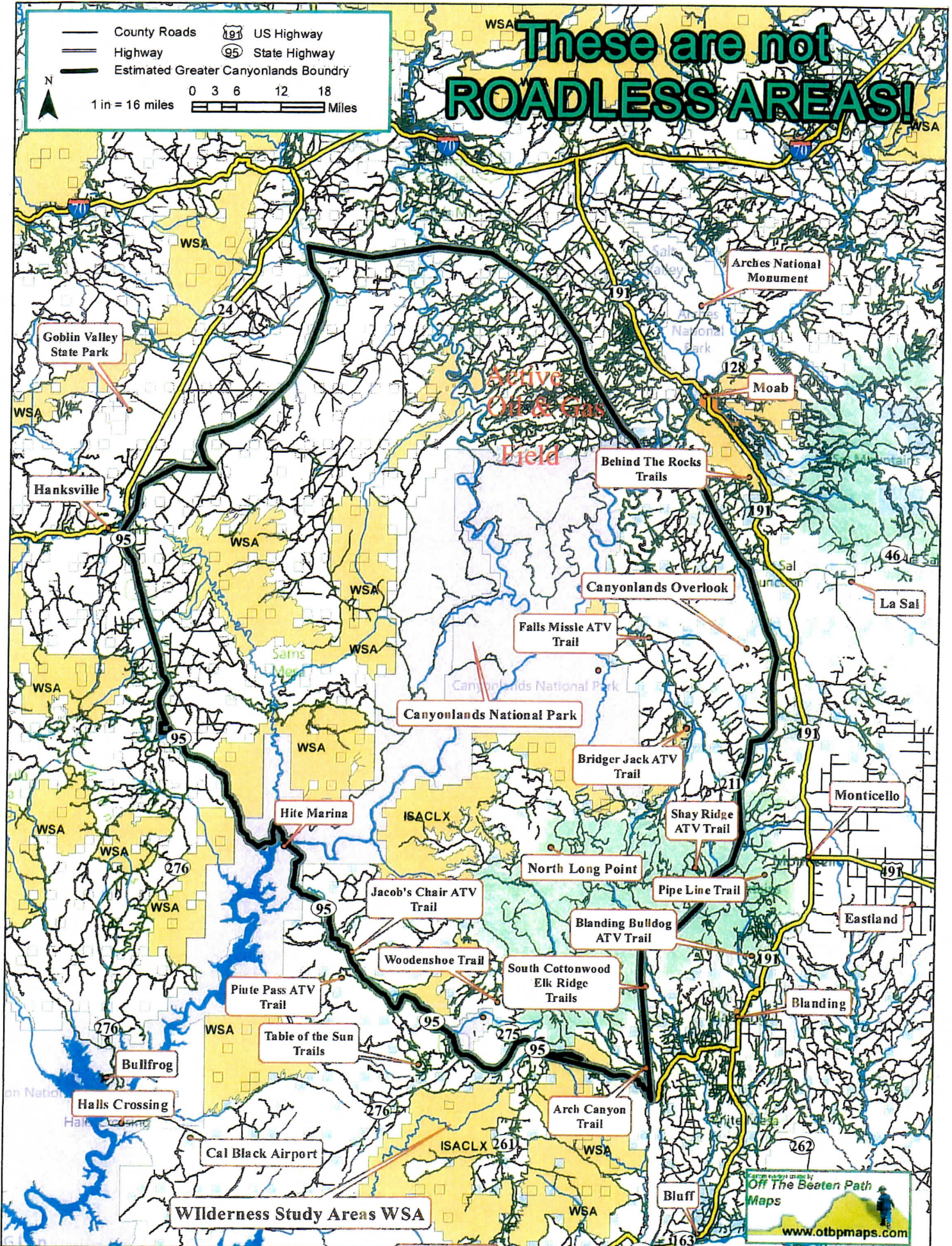


GREATER CANYONLANDS PROPOSAL AREA

These are not ROADLESS AREAS!

County Roads US Highway 191
Highway State Highway 95
Estimated Greater Canyonlands Boundary

1 in = 16 miles 0 3 6 12 18 Miles



www.otbpm.com
www.otbpm.com

